

Fire Fighting and Road Maintenance Vehicles

General Description



4 Stage Vertical - Horizontal Split Shaft PTO

PTO Output can operate in motion, PTO Output can be designated to main transmission side or differential side

PTO Outputs can work independently from each other in case of PTO Output. PTO Outputs can be DIN & ISO Standards Flange and ISO & UNI Standard can also be designed for direct coupling of pumps.

Self Lubrication

Control Type: Pneumatic & Mechanic

Mounting Type: Split Shaft

Optional Components

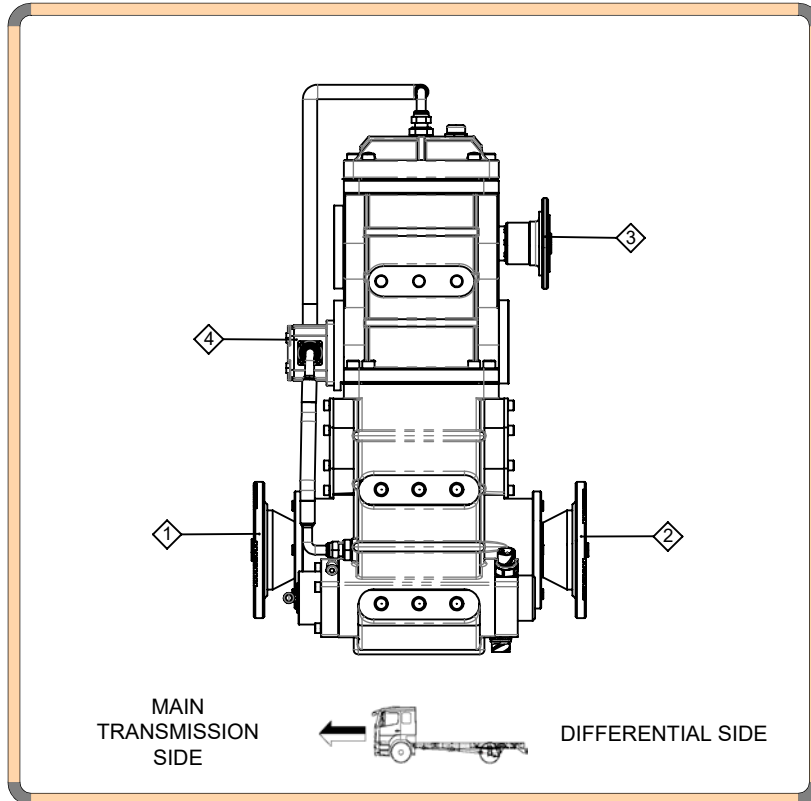
RPM Counter Sensor
Engage/Disengage Sensor
Drum Brake
Cooling System
Second PTO Output

Fire Fighting and Road Maintenance Vehicles

Technical Description

Technical Values			
	Max. Values	Input/Output	Working Range (MAX.)
① & ②	800 KGM	1/1	-
③	135 kW	1/1.1 - 1/1.7 - 1/1.96	2500-3300 RPM
④			

Weight	175 kg
Body Material	GGG-50
Oil Type & Amount	80W 90 & 4,2 lt (Vertical)



- Kozmaksan Şirketi katalogta verilen bilgileri önceden bildirmeden değiştirme hakkını saklı tutar. Bu belge genel bilgiler içerir ve taahhüt ve sözleşme niteliğinde değildir.
- Verilen güç ve tork bilgileri sadece PTO'ara şanzımana aittir. Uygulama yapılacak şanzıman, motor ve aracın PTO'ara şanzıman için uygun gördüğü değerleri aşmayınız.
- Şanzımana civata ile bağlanan PTO'lara takılacak pompa, şaft vb. parçaların ağırlık ve askıda kalan uzunlukları şanzıman ve araç üreticisinin onayladığı limitleri geçmemelidir.

Fire Fighting and Road Maintenance Vehicles

Output Description

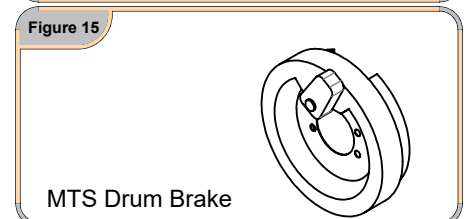
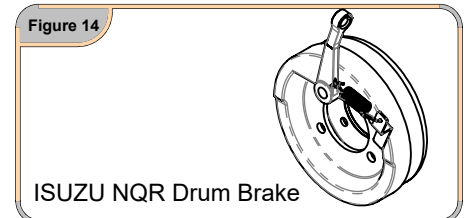
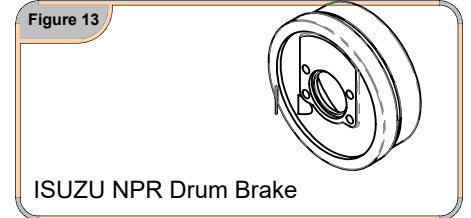
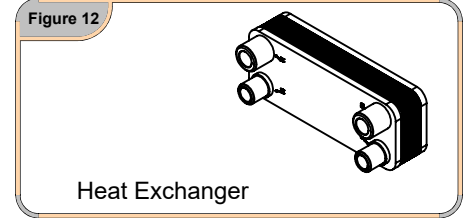
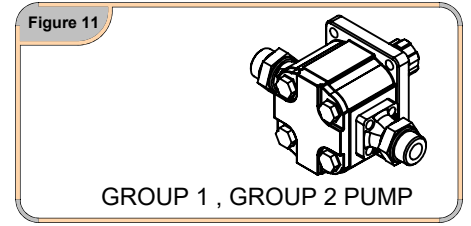
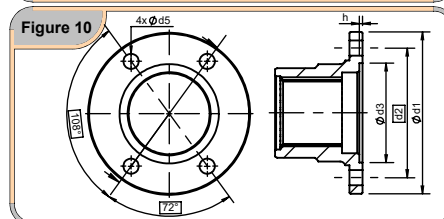
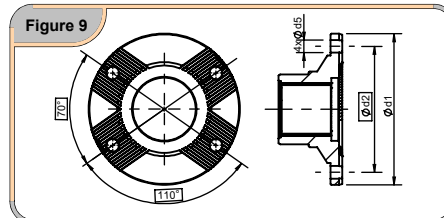
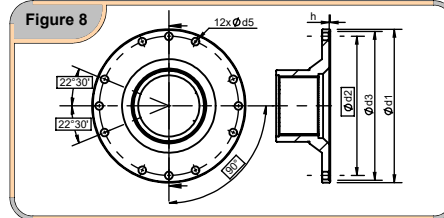
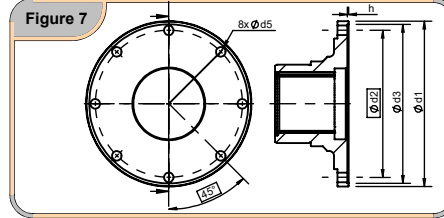
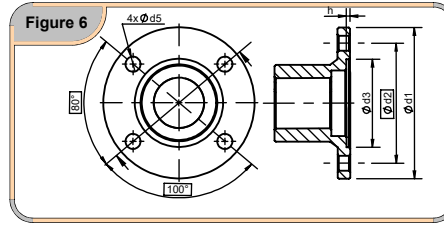
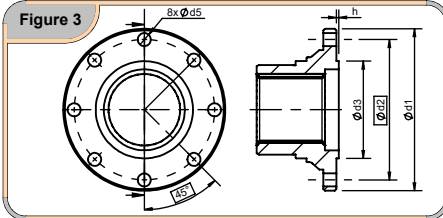
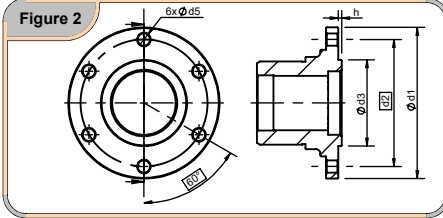
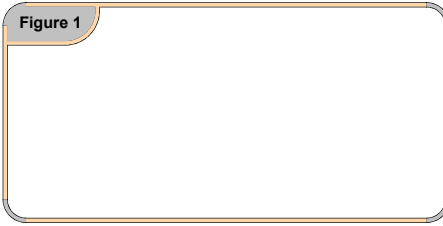
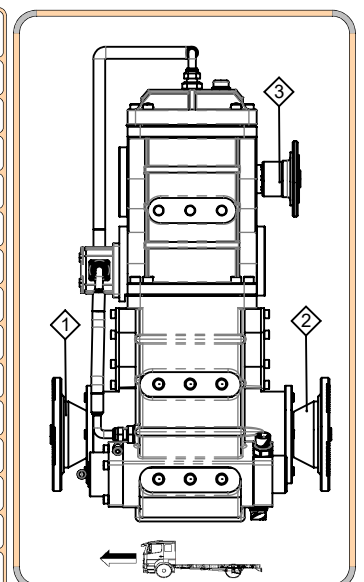


Figure No	No of Bolt	Ø d1	Ø d2	Ø d3	Ø d5	h	Standard	1	2	3	4	5	6
1	-	-	-	-	-	-							
2	6	100	84	57	8,1	2,3	ISO 7646 - DIN 100			C06-011			
3	8	120	101,5	75	10,1	2,3	ISO 7646 - DIN 120			C06-061			
3	8	150	130	75	12,1	2,3	ISO 7646 - DIN 150	C06-044	C06-044				
6	4	87	69,85	57,10	8,1	2	ISO 7647-SAE1100			C06-203			
6	4	146	120,65	95,25	12,1	2,3	ISO 7647-SAE 1510	C06-028	C06-028				
6	4	116	95,25	69,85	12,1	2,3	ISO 7647-SAE1400	C06-154	C06-154	C06-007			
6	4	97	79,37	69,85	10,1	2,3	ISO 7647-SAE1300			C06-144			
6	-	-	-	-	-	-							
7	8	175	155,57	168,22	10,1	1,5	ISO 7647-SAE1600	C06-009	C06-009				
8	12	203	184,15	196,86	10,1	-	ISO 7647-SAE1800						
9	4	180	-	15	-	-	ISO 8667 - T 180	C06-005	C06-005				
9	4	150	-	13	-	-	ISO 8667 - T 150						
10	-	-	-	-	-	-							



Please contact with KOZMAKSAN, if you have any questions or requests.